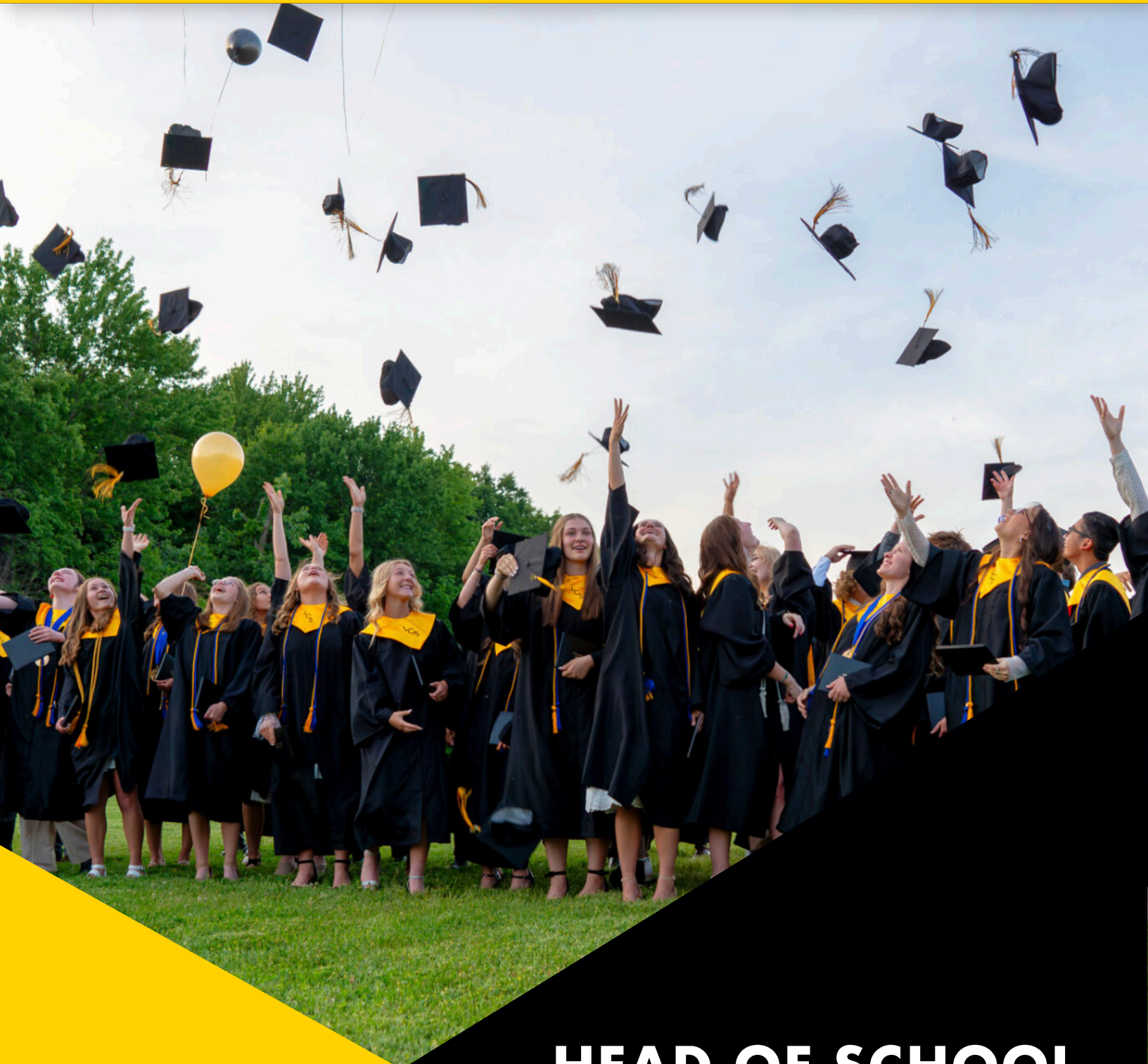




LANSING CHRISTIAN
SCHOOL



HEAD OF SCHOOL

LANSING, MI



INTRODUCTION

Lansing Christian School (LCS) was established in 1951 by a group of families who had a vision for a preschool-12th grade Christian school that would be vigorously academic and thoroughly Christian. Today, LCS provides that education to 585 students representing more than 70 different churches and is the largest private school in the Greater Lansing area. Since 2020, enrollment has increased 12%.

In 2000, Lansing Christian School moved to its current location and sits on a beautiful 66-acre campus a few miles from Michigan State University. With a preschool through 12th grade campus, the facilities support healthy interactions between students across grade levels.

Lansing Christian School is non-denominational and partners with Christian parents who desire to have their children receive a Christ-centered education. From the beginning, LCS has never wavered in its commitment to provide academic excellence to Christian families in the greater Lansing area.



MISSION

Recognizing God as the source of all truth, wisdom and knowledge, Lansing Christian School partners with Christian parents to educate children to the full extent of their God-given abilities. We engage students in an academically challenging environment that fosters spiritual, intellectual, social and physical growth. We equip students to exalt God and follow Christ in all of life.

VISION STATEMENT

Equipping young men and women to engage and transform the world for Jesus Christ.

SCHOOL VERSE

*That they might set their hope in God.
Psalm 78:7*



CORE VALUES

WE GLORIFY GOD IN ALL OF LIFE

Knowing God, loving His Word, and living for Him are the foundation for everything we do at Lansing Christian School. We seek to live our faith in our relationships, our character, and our service.

WE HONOR GOD THROUGH EXCELLENCE

Striving for excellence is expected from all members of the Lansing Christian School community. We foster excellence in academic, co-curricular, and extracurricular programs.

WE LIVE AND LEARN IN CHRISTIAN COMMUNITY

Cultivating caring and respectful relationships is integral to every aspect of school life. We prepare students to flourish as they discover and develop their God-given gifts and abilities. We teach, model, and practice servant leadership.

WE PARTNER WITH CHRISTIAN PARENTS

Lansing Christian School exists to assist parents in building a strong Christian foundation for their children. We partner with Christian families who desire a Christ-centered education for their children.



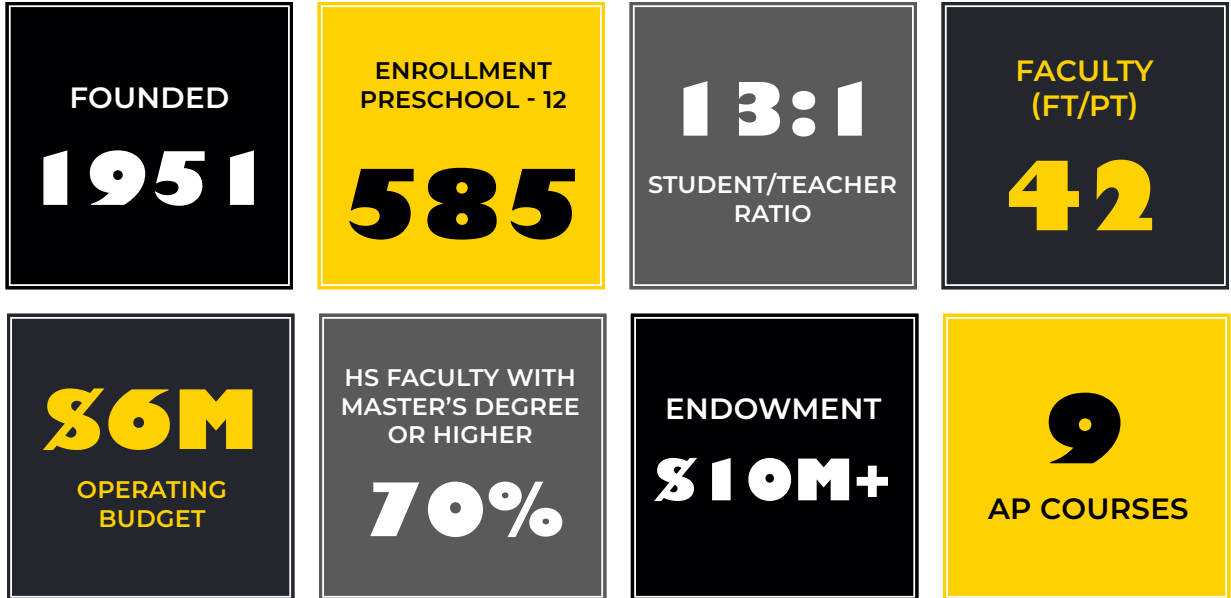
BELIEFS

Lansing Christian School is committed to the Christian perspective of life as was set forth in the Bible, recognizing God as the Creator of all things, Jesus Christ as the Son of God and the Savior of all who acknowledge Him as Lord, and the Holy Spirit as the one who reveals truth. We believe that the knowledge of God is the beginning of wisdom, that fellowship with God is the basis for true fellowship with one another, and that each student is uniquely created by God as a spiritual, intellectual, social, and physical being and is endowed with particular gifts. The goal of our school, in partnership with the home and church, is to assist parents to train their children in the nurture and admonition of the Lord and to aid each student to develop to his or her full potential. Therefore, we believe that it is right and reasonable that families join together to provide an education accomplishing this aim.





LCS AT A GLANCE



[VIEW LCS ANNUAL REPORT](#)





ACADEMICS

Lansing Christian School's aim is to produce alumni who are:

- Practicing Christians
- Well Prepared for College & Career
- Grateful to God for the Blessings of Civil & Religious Liberty
- Stewards of Our Shared Christian Heritage
- Possessing a Positive, Purposeful Outlook on Life
- Independent Thinkers
- Cultural Influencers

To achieve these objectives, Lansing Christian School will ground itself in the historic Christian faith, as expressed in the Nicene and Apostles' Creeds, and all aspects of school culture – intellectually, spiritually, and socially – will cultivate the seeking of truth, beauty, and virtue.

As such, the school's curriculum shall encompass the following:

- Be content-rich, balanced, rigorous, and comprehensive, with emphasis on the four core liberal arts disciplines of math, science, English language arts, and history, and include the study of Bible, music, art, physical education, and world languages.
- Emphasize our shared Christian history, traditions, beliefs, and values, including exposure to their foundations and the core literary canon that are part of Western Civilization and the Judeo-Christian roots and biblical underpinnings of America's founding ideals. The goal is for students to know their own story, in all its complexities, merits, and flaws – that is, the story of religious liberty; democracy and human rights; man's capacity for rationality, invention, and virtue; and the means of human flourishing – and to impart the kind of learning needed to preserve these blessings.
- Include great works of literature, philosophy, politics, and art (which teach us about human nature and the human good), along with the serious study of mathematics and the sciences (which teach us about the natural order), at all school levels. The goal is to examine the ideas, words, and deeds that have most significantly shaped the world into which students were born, in order to provide them with the fullest understanding of the world in which they will live.



- Lay a strong foundation across integrated key subjects and build towards mastery, with graduates being well prepared intellectually, morally, and civically, regardless of future vocations.
- Use time-tested, proven teaching methods, subject area content, and standards to which students are held.
- Follow a structure that allows for recurrent examination of subjects throughout a student's schooling.
- Include a strong emphasis on language, literacy (including phonics), writing, and mastery of the English language at all grade levels, including great works of literature and primary source documents.
- Aspire to set the highest possible standards for nurturing students' unique talents and helping them fulfill their God-given potential, which means avoiding sole reliance on predominantly secular state or national content standards but, instead, exceeding such standards.
- Follow an established scope and sequence to ensure continuity across grades, subjects, and faculty.
- Orient classroom instruction around primarily intellectual exercise and development. The goal is to produce alumni armed with mastery and accomplishment who are thereby enabled to lead purposeful, contented lives.
- Include memory work and the public recitation thereof, especially in Bible classes, at the K-12 grade levels.



OUTDOOR LEARNING

When Lansing Christian School moved to its beautiful 66-acre campus, it was the hope then that someday the school would utilize the expansive acreage and wooded wetlands as part of a student's Christian education. Optimizing the school's facilities and grounds to better support the people and programs at LCS became a priority with the school's most recent strategic plan launched in 2020.

What motivates Lansing Christian School to use the outdoor setting for learning?

- The purpose of creation is to bring us closer to God, the Creator. Outdoor learning provides an opportunity to support students in seeing, understanding and experiencing God's presence through His creation and to learn through their education how to steward and care for God's creation.
- Nature is an essential investment in a student's physical, emotional and spiritual health. Children live through their senses and being close to nature focuses, calms and excites the senses. Full use of the senses helps students stimulate thinking, creativity and wonder.
- Being close to nature helps boost a child's attention span and children have a greater ability to concentrate when they learn in more natural settings.
- With the amount of time children and young people spend on screens, there is a need to bring balance to their lives and to their learning.



EARLY LEARNERS PRESCHOOL AND KINDERGARTEN

Early Learners Preschool is specifically designed for 3- and 4-year-old children, providing a firm foundation in their education. They discover that they are uniquely created, deeply loved, and have a role in God's Story. Children are invited into God's Story by providing formational learning experiences that nurture their faith development and empower them to explore God's world as they discover their role in His Story.

Program Highlights include: strong reading readiness curriculum, development of gross and fine motor skills in blended activities, and spiritual growth through scripture memorization, daily Bible lessons, and a caring community.

For some students, Kindergarten is the beginning of the LCS academic journey, and for others, it is a transition toward more structured learning from preschool. Highlights of the Kindergarten experience include: a tailored approach based on a child's strengths, interests, and learning style; a Christ-centered, caring community that fosters meaningful friendships; and an active learning approach that blends projects, group activities, and independent work in the daily schedule.





ELEMENTARY

Lansing Christian School Elementary students gain transformational experiences in which they balance more responsibilities, build new friendships, and acquire more academic knowledge. The program equips students with a rigorous curriculum and academic skills such as critical thinking, innovation, and creativity to play a role in God's Story.

Some program highlights include: project-based learning, such as STEM experiments, group collaboration and presentations; an emphasis on spiritual formation helping students develop a way of seeing and understanding God's world from a biblical worldview; and enriching activities in athletics, creative arts, and clubs.



MIDDLE SCHOOL

Middle school students are encouraged to bear the image of Christ and celebrate their unique and special God-given abilities. With those abilities, students are able to know God by learning about His world through their studies and use their knowledge to serve the needs of others.

With the Middle school program, students are immersed in a purposefully-designed curriculum, exciting extracurriculars, and a Christ-centered culture that empowers them to thrive. Program highlights include: comprehensive core subjects and electives with faith integrated throughout subjects; leadership opportunities in mentoring students in younger grades; and enriched learning through extracurriculars such as Student Council, Chapel Praise and Worship Team, and Musicals.



HIGH SCHOOL

Knowing that High school students are readying themselves for the next step in their faith journeys and lives, Lansing Christian prepares them with a Christian worldview to pursue God's plan for their lives.

In High School, students are challenged to discover who they are and what they stand for. They are exposed to a challenging curriculum preparing them for college and beyond. Program highlights include: comprehensive core subjects and electives with faith integrated throughout subjects; academic excellence through AP courses and a college preparatory curriculum; a highly trained faculty; and college and career planning with dedicated advisors.

[VIEW LCS SCHOOL PROFILE](#)



THE ARTS

Lansing Christian School offers a flourishing creative arts program preparing students to live lives of worship and service to God. Educating the whole child involves helping students understand, appreciate, and develop the many gifts God has given them.

In the study of performing and visual arts, students learn important skills enabling them to create and perform in a variety of ways. Art classes, art competitions and displays, concerts, festivals, and musicals are just some of the opportunities for students to become a part of the arts at Lansing Christian School.

VISUAL

Art Classes – Preschool-8th grade students engage in Art classes weekly. High school students select from courses including: Sculpture/Ceramics, Drawing, Painting, Creative Entrepreneurship, Yearbook, Mixed Media, and Advanced Art.

Signature events include:

Creative Arts Nights – During the Middle and High School Creative Arts Night, student work is showcased and families enjoy performances by choirs and bands. During the Preschool-5th grade Creative Arts Night, Elementary student art is on display and through a musical performance students demonstrate learning from their music classes.

Art Competitions – High School students participate in a Michigan State University art competition in which students display their best work.



PERFORMING

Students from Preschool through 12th grade participate in weekly music classes as well as many performance opportunities throughout the year, including concert and marching bands, choirs, and musical productions.

Signature events include:

School Musical – Middle and High school students have the opportunity to sing and act, as well as contribute to the production with set builds, design, and behind-the-scenes support.

Choir and Band Concerts – Middle and High School choirs and bands perform concerts for the school and the Greater Lansing community throughout the year.

Festivals – Festivals and clinics provide an opportunity for band and choir students to improve their musicianship and hear other bands perform. The High School Chorale, Wind Ensemble, and Concert Band perform at festivals and clinics throughout the year.

Talent Nights – Middle and High school students showcase their talents on two different nights – Middle School Spotlight Night and High School Talent Night.

Yearly Theme Song – LCS students create an original theme song to complement the yearly theme and it is sung by Elementary students at chapels and events throughout the year.





ATHLETICS

Lansing Christian School provides a Preschool-12th grade athletic program that develops student-athletes through education and competition. Athletics provides a Christian foundation that allows student-athletes the opportunity to grow personally and spiritually, and enjoy a positive athletic experience.

Lansing Christian School offers 23 athletic teams, clubs and co-op opportunities – almost 70% of High School students participate on at least one athletic team. LCS Pilgrims participate in the MHSAA Division IV/Class D division. Competitive sports programs are available to Middle and High School students.

For grades K-5, LCS offers youth baseball and basketball clubs. As well, Pilgrim Play offers a co-ed program designed to develop skills in soccer, volleyball, basketball, and baseball while learning to play with a positive attitude.

SPORTS

Student-athletes compete in these varsity sports:

- Baseball – B
- Basketball – B/G
- Cross Country – B/G
- Diving – G
- Equestrian – B/G
- Golf – B/G
- Lacrosse – B/G
- Soccer – B/G
- Softball – G
- Swimming – B/G
- Tennis – B/G
- Track and Field – B/G
- Volleyball – B/G
- Water Polo – G

SPIRITUAL LIFE

Lansing Christian School considers it a high calling to educate and equip students to be able to engage the world for Jesus Christ and join God in His transformational work in our communities and in our world. Serving others helps students gain a greater understanding of God's world and develop a heart for His people. At each grade level students are empowered to apply knowledge and skills to produce real work that meets real needs for real people in the Lansing community and throughout the world.

Every student in grades K-12 participates in chapel twice weekly and has opportunities to lead their peers in chapel. At Middle School and High School, students are able to join the chapel leadership teams, which are responsible for planning chapel events and leading worship. Additionally, Bible classes are a required component of the curriculum at every grade level.





CLASS TRIPS

Each year LCS students attend a variety of trips away from campus for the purpose of building community, developing a servant's heart and fostering spiritual and intellectual growth.

It is a valued tradition at LCS for middle and high school students to participate in an annual Fall Retreat. Cultivating Christian community among LCS students and teachers is the focus of these two days away from school. One of the highlights of High School Retreat is the senior faith stories that are presented during high school chapel sessions.

Each year, LCS seniors look forward to Senior Survival, a well-loved yearly tradition for seniors that began in 2007. Senior Survival is a weekend camping trip on South Manitou Island in Sleeping Bear Dunes National Lakeshore. At the beginning of their senior year, students, with backpacks full of basic essentials, cross Lake Michigan and land on South Manitou Island for three days and two nights of camping and backpacking the island. The trip encourages the seniors to work together, take responsibility, and stretch themselves in new ways while enjoying God's creation. Their time together includes intentional conversation, dreaming, and prayer around how the senior class hopes to impact the world for God in the year to come.

Other trips include the Stratford Festival; 8th grade trip to The Ark Encounter; Junior trip to Gettysburg and Senior trip to Washington, DC.



STUDENT LEADERSHIP

National Honor Society membership honors outstanding students. Once selected, member participation in chapter activities provides opportunities for students to reach their fullest potential at school and in life.

LCS partners with the Student Statesmanship Institute (SSI) for a three-day mock legislative program for seniors. SSI offers this dynamic program that provides biblical worldview sessions and real-world leadership training by involving students in a mock legislative experience.

Student Ambassadors represent LCS at the highest level, communicating to new and prospective students and families the school's mission, vision, and core values. Visitors see Student Ambassadors as experts – people who know the school inside and out and are able to help them get a feel for its programs, strengths, and day-to-day life.

FINANCES AND FUNDRAISING

Lansing Christian School has a \$6M operating budget and holds no debt. It also has a supporting and separate 501c3 charitable organization – The Lansing Christian School Foundation. Its purpose is to cultivate donor relationships with those who support the mission of Lansing Christian School, and by being resource stewards.

The Foundation raises funds for the annual needs of the school and invests in the long-term financial health of the school through endowments. The Foundation now manages an endowment of over \$10,000,000 held in a restricted fund, overseen by the Foundation Board, allowing future growth to be used as dependable income for the school.

Fundraising also takes place through the Annual Fund reducing the cost of tuition to educate each student. The Black and Gold Celebration is one of LCS's primary fundraisers with all proceeds supporting the Annual Fund. The Annual Fund goal is \$600,000.



GOVERNANCE AND ACCREDITATION

Lansing Christian School is owned and operated by the Lansing Christian School Association, to which all parents automatically belong. The Association elects School Board members to the Board of Trustees (nine members) who are responsible to the Association for the school's operation.

The purpose of the Board is to ensure that LCS achieves results consistent with its mission. The Board of Trustees' primary connection to the operational organization, its achievement, and its conduct will be through the Head of School. The Board works with the Head of School through written policies that prescribe the organizational results to be achieved and describe organizational situations and actions to be avoided, allowing the Head of School to use a reasonable interpretation of these policies. All authority and accountability of staff is considered the authority and accountability of the Head of School.

Lansing Christian School is accredited by Christian Schools International (CSI). LCS was awarded five-year reaccreditation in January 2023.

STRATEGIC PLAN

The 2020-2025 LCS Strategic Plan was developed for the purpose of moving forward a shared vision for the school's future. Building upon a foundation of academic excellence, LCS is advancing a framework for student learning that is curriculum-based and incorporates integrated and active learning experiences that provide students the opportunity to live out their faith and their learning by engaging in real work that meets real needs for real people in our community and in the world. LCS aims to cultivate a learning environment where all students belong. We seek to support the whole student, including student social/emotional and mental health, as part of Christ-centered learning.

Engaging and transforming
the world for **Jesus Christ.**

The strategic priorities in the 2020-2025 strategic plan are grounded in the core commitments of Lansing Christian School and work to strengthen and advance the vision, mission, and core values. These foundational beliefs inform and shape the direction and purpose of the strategic priorities. Priorities include:

Transformational Learning – to further develop and implement student-centered, holistic, and formational learning that shapes the lives of students. This learning will be directed toward the school's vision and guided by its mission, core values, habits of learning and habits of living. LCS is engaging its teachers in ongoing professional development and support.

Community Health and Wellbeing – commits to the health and wellbeing of students through dedicated structures aimed at supporting whole student development and addressing existing social-emotional and mental health challenges. Anchored by the foundational beliefs of Lansing Christian School that every child belongs to Jesus Christ, the school seeks to create a supportive culture that promotes whole student health and wellbeing through education, programs, staff training, and community resources.

Fostering Belonging for All Students – LCS exists to partner with all Christian parents in the education of their children and seeks to increase its capacity to be a community where students and staff, created in the image of God, experience a sense of belonging.

Optimizing the Campus Environment – Providing a campus learning environment to foster spiritual, intellectual, social, and physical growth requires a learning environment that supports the people and programs advancing that mission. LCS seeks to be faithful stewards of our facility by identifying the best ways to optimize our campus, including the surrounding outdoor spaces, to support transformational learning, corporate worship, and the health and wellness of students.

Sharing the Student Learning Experience with a Growing Audience – to equip young men and women to engage and transform the world for Jesus Christ. With exceptional faculty, dedicated staff, and close partnership with parents, LCS provides an engaging and nurturing learning environment on its campus with hopes to serve more Christian families in the Greater Lansing area.



THE OPPORTUNITY

Lansing Christian School is seeking its next Head of School to begin July 2025. Wendy Hofman is pursuing her next chapter after having served as Head of School at LCS since 2013. Reporting to the Board of Trustees, the Head of School will lead an amazing team of educators within a vibrant learning environment where knowing God, loving His Word, and living for Him are the foundation for everything they do. Lansing Christian fosters excellence in academic, co-curricular, and extracurricular programs while cultivating caring and respectful relationships within the context of Christian community.

EXPECTATIONS

The Head of School at Lansing Christian School is appointed by the Board of Trustees and charged with the general responsibility of accomplishing the school's mission and goals as directed by the Board. Building upon a strong foundation, the Head of School will lead LCS into the future, promoting excellence in all aspects of the school and partnering with parents to realize the greatest possible intellectual, spiritual, social, and physical development of students. The Head of School will strive to secure the school's position as the affordable and academically superior choice for Christian families in the mid-Michigan region.

The Head of School exemplifies the highest standards and instructs, inspires, and holds accountable the staff and students to ensure that educational goals are achieved. He or she ensures that an attitude of Christ-like love and respect permeates the school and that all aspects of school culture are directed toward the pursuit of truth and Christian wisdom. The Head of School ensures curricular integration of core Biblical principles derived from the Lansing Christian School foundational doctrinal statement and cultivates a school environment characterized by love of learning, the fruits of the Spirit, and devotion to the enlightenment of Scripture.

Honoring **God** through excellence.

PRIMARY QUALIFICATIONS

Academic Background

- At minimum a bachelor's degree is required, while a master's degree or higher is greatly valued, ideally in education, educational administration, or business management, and preferably from a Christian institution.
- Experience in educational leadership, preferably at a Christian institution.
- Proficiency in a comprehensive array of educational methods, pedagogies, and philosophies.
- Knowledgeable appreciation of Christian theology, Christian church history, the liberal arts, the fine arts, physical education and athletics, and general intellectual and cultural enrichment.

Personal and Spiritual Expectations

- A practicing, professing Christian, desiring to grow in faith daily.
- Belief in the Bible as the inspired, the only infallible, authoritative Word of God and the standard for daily living.
- Faithful attendance at a local Bible-believing church whose doctrine and practices align with the LCS doctrinal statement.
- The utmost integrity, professionalism, and good moral character.
- A servant-leader heart as exhibited by an approachable, humble manner.
- A passion for Christian education.

Leadership Skills

- Exceptionally high standards of excellence in all work.
- Strategic mindset for growth.
- Demonstrated ability to build consensus, enhance performance, and lead through change.
- Creativity, intellectual curiosity, and high emotional intelligence.
- Ability to communicate verbally and in writing with outstanding poise, presence, and effect.
- Decision-making, including problem-solving and conflict resolution, that thoughtfully aligns with the teachings of Christ.
- Ability to delegate, direct, and hold staff accountable in a professional, disciplined manner.
- Receptivity to appropriate accountability, welcoming and acting upon constructive feedback.



KEY RESPONSIBILITIES

Board of Trustees

- Maintain a respectful, proactive, collaborative relationship with the Board, participating in all regular and special Board meetings as required or requested.
- Work constructively with the Board to advise and assist in strategic planning; subsequently, determine, implement, and execute annual objectives to accomplish the plan's goals.
- Provide proper reporting and communication to the Board regarding all aspects of the school.
- Represent Board policies and directives faithfully to all members of the LCS community.

Academic Oversight

- Serve as the chief academic officer, with broad oversight of teaching and learning.
- Assure the setting of high-performance standards in educational achievement.
- With the appropriate staff and faculty, oversee design, development, and implementation of the stated curriculum, maintaining an updated curriculum guide.
- With the appropriate staff and faculty, oversees the implementation of an effective student assessment system that will measure student growth and learning at all academic levels of the school.
- Ensure that educational content and activities reflect a Biblical worldview and ethic consistent with the LCS doctrinal statement.
- With the principals, oversee student issues of an academic, spiritual, and disciplinary nature.
- Ensure re-accreditation with the appropriate accrediting organization on a recurring basis.

Institutional Advancement

- Lead with boldness and courage to articulate and implement the LCS mission and goals, acting as the face of the school and communicating effectively with all constituencies.
- Lead institutional efforts to continue and improve on strategic and sustainable programs for development, promotion, and enrollment management.
- Develop strong relationships with current and potential stakeholders in order to increase goodwill and financial support.
- Foster a culture of gratitude and giving that promotes lifelong LCS community engagement.



Personnel Management and Development

- Recruit, train, develop, and manage exceptional administrators, faculty, and staff, all of whom enthusiastically affirm the LCS doctrinal statement and mission.
- Cultivate a passion for teaching and administrating that leads to a passion for learning.
- Support and encourage staff, especially teachers, in performing their responsibilities by acknowledging and responding to concerns, mediating grievances, and providing advice on handling behavioral and academic issues.
- Facilitate growth of expertise through mentoring and professional development opportunities.
- Ensure that staff uniformly enforce all academic and student conduct policies.
- Lead staff into respectful, productive relationships of cooperation and collaboration among themselves, with parents, and with the Board.
- Ensure the annual evaluation of all personnel in an organized, consistent system that includes constructive feedback and documented performance records.



KEY RESPONSIBILITIES CONT...

Operations

- Oversee daily school operations, and support and implement the policies of the Board with fidelity to their intended outcomes.
- Prepare and present an annual budget, and upon Board approval, manage revenues and expenditures to satisfy financial obligations and ensure fiscal sustainability.
- Enact and enforce appropriate operational policies and procedures; maintain and disseminate up-to-date school handbooks, employee manuals, and other documents.
- Oversee the management of school facilities, equipment, and property, ensuring that the campus is clean, safe, and attractive and supports teaching and learning.
- Recommend annual tuition schedules for Board approval, and oversee financial aid programs.
- Ensure that school policies and practices comply with all applicable federal, state, and local laws.
- Uphold and enforce school policies in a fair and consistent manner, ensuring that order and discipline are maintained.



Community Relations

- Serve as a Christian role model in attitude, speech, and actions, maintaining a calm and respectful tone at all times.
- Foster a unified and vibrant community of students, families, and staff, treating them with warmth, dignity, and consideration.
- Communicate regularly with parents as partners in nurturing the intellectual, spiritual, social, and physical development of their children.
- Develop and maintain rapport with students, functioning as an authoritative and engaged presence on campus during schooldays and at co-curricular and other school events.
- Positively represent Lansing Christian School to the external community.

THE CHARGE

Growth

- Cast vision beyond the here and now by working with the Board of Trustees and the entire LCS community creating a shared vision to build upon the existing strategic plan and to lay the groundwork for a new one.
- Build out the campus master plan by setting priorities and fundraising for both new facilities and building improvements, especially with the arts, athletics, and outdoor education.

Culture

- Foster a faculty and staff culture that is supportive, predictable, and transparent.
- Build upon the exceptional work of the outgoing Head of School, but also have courage to seek Christ's anointing in the transition of leadership to place your own personality and passion into the community.
- Seek to increase opportunities for LCS to be known as a school that serves in their local community, region, and around the world.
- Develop strong relationships with the alumni community and tap into all of its pride and potential for Lansing Christian School.



Academics, Arts, Athletics

- Strive to become the premier Christian school in Central Michigan, while holding firm to Lansing Christian School's mission, vision, values, and deeply held beliefs.
- Advance academic programs, instruction and outcomes for students to provide them with even better preparation for transitions within LCS and for their future college and career paths.



ABOUT LANSING, MI

The Greater Lansing area is comprised of Clinton, Eaton and Ingham counties and is located in the heart of Michigan. The central location in the state makes it an attractive destination for weekend getaways, conventions/meetings and sports tournaments. Home to the State Capitol, mid-Michigan offers world class attractions, dining, and lodging. Lansing has a very walkable downtown with a large convention center along the Grand River and dozens of restaurants and attractions within a few block radius. East Lansing is home to Michigan State University and boasts the youthful energy of a University town.



Greater Lansing offers an abundance of big city amenities with small town charm. The area is authentic, family-friendly and welcoming. It is a diverse community of 475,000 residents with nearly 50,000 students at Michigan State University. Residents speak 63 different languages with a multitude of vibrant neighborhoods.

PLACES TO VISIT IN LANSING



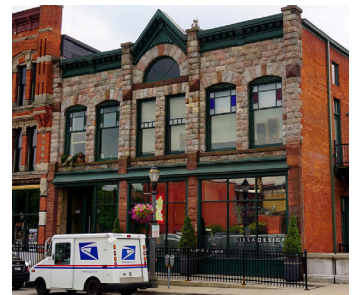
MICHIGAN STATE
CAPITOL



MICHIGAN HISTORY
CENTER



POTTER PARK
ZOO



OLD
TOWN



SEARCH PROCESS & TIMELINE

The Lansing Christian School search is underway to appoint the next Head of School who will begin on July 1, 2025. Lansing Christian School has appointed a Search Committee and has engaged NextEd to provide support. Compensation will be competitive with comparable private Christian schools in Michigan.

All candidates will be treated with the utmost confidentiality and discretion. Interested candidates should apply online through [NextEd's website](#). The online application will include specific personal information and the following required uploaded documents:

- Interest cover letter
- Resume
- Statement of personal Christian faith

Candidates who are invited to continue in the process as semi-finalists will have a second-round of data collection and other information deemed important to the search. Semi-finalists will also participate in a recorded video interview with NextEd consultants.

NextEd will continue the recruitment process until a candidate has been selected by the Search Committee, but given this highly desirous opportunity, we anticipate the following timeline:



COMMUNICATION

Please direct all inquiries and nominations in confidence to:

Kurt Unruh, NextEd Partner
Search Consultant
303.319.3335
kurt@next-ed.com

Steve O'Neil, NextEd Partner
Search Consultant
970.977.4585
steve@next-ed.com

CLICK HERE TO APPLY